

LCM-IE Configuration Mode Guide

rev-3.0

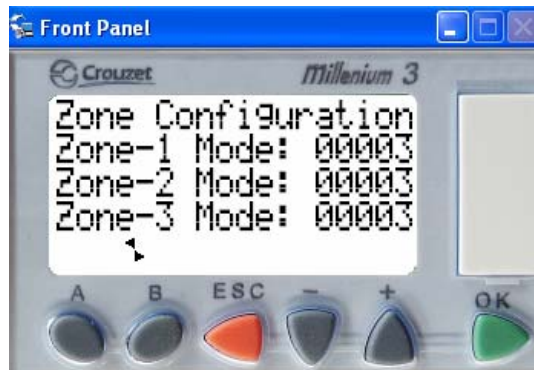
No.	Mode	Description	Priority
1	PC	Photo Control Only	PC.
2	TC	Time Clock Only	TC.
3	PC+TC	Photo Control and Time Clock	PC or TC.
6	TC+RSW	Time Clock and Switch	TC.
7	PC+TC+RSW	Photo, Time Clock and Switch	Switch must initiate start of the PC+TC sequence. Switch priority On/Off when PC is On only.
13	PC+RSW+OVR	Photo, Switch and Override	PC, Switch On/Off, with PC Off 30min OVR. OVR time is programmable. TC is On 24/7.
14	TC+RSW+SWP	Time Clock, Switch and Sweep	TC, Switch On/Off with after hours sweep.
15	PC+TC+RSW+SWP	Photo, Time Clock, Switch & Sweep	Switch must initiate start of the PC+TC sequence. Switch priority On/Off when PC is On only. Warning flash, sweep and grace after hours.

Note: Zones 1-3 have independent control, Low light = PC On
When PC is not selected the input should be disconnected.

The configuration numbers are shown in the following LCM-IE screen.

The example shown has all three channels set to 3.

Configuration 3 is PC+TC or photo and time clock control without any remote switch.



THE MAXIMUM LCM-IE CHANNEL COUNT IS 6.