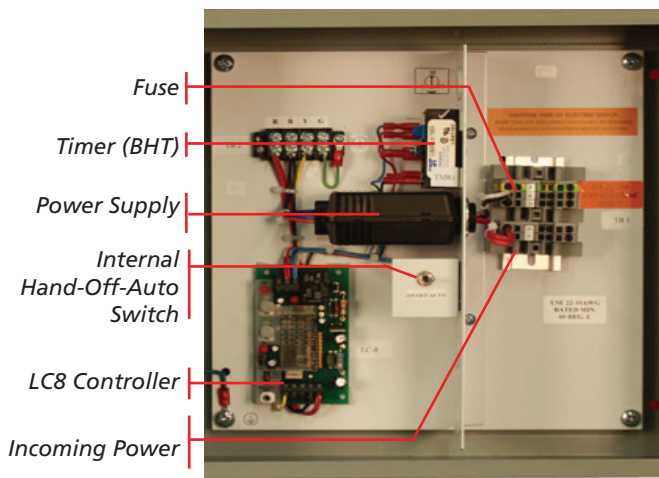


LC81-B, LC81-BHT

APPLICATIONS

- Canopy
- Fast Food Restaurants
- Gas Stations
- Outdoor Signage
- Parking Lots
- Security Lighting



PROJECT	
LOCATION	

FEATURES

- Adjustable ON/OFF setpoints at the control unit for convenient, flexible, low maintenance lighting control
- Low voltage controls provide safe and easy installation
- Choice of sensor styles—indoor, outdoor, atrium or skylight sensors. Provides an adjustment range of 0-7,500fc
- Input time delay prevents switching due to temporary light conditions
- Hold On Timer (BHT) for HID applications
- Compliant to Title 24
- UL508A Listed
- 2 year warranty

DESCRIPTION

The LC81-B and LC81-BHT photo sensor lighting control systems automatically switch dry contacts in response to changes in natural daylight. The LC8 based systems are capable of switching control of incandescent, fluorescent and HID and LED lighting loads. The controller is available in a Basic(B) model as well as the BHT model which adds an optional "Hold On" timer to prevent the short cycling of HID lamps.

The LC81-B system includes one LC8 control board, internal Hand/Off Auto Switch, terminal blocks and one 20A switching relay housed in a NEMA 1 hinged door enclosure. The system includes one CES photo sensor.

The dual setpoint system precisely switches loads according to the selected light level configuration. LOW and HIGH light levels are calibrated to their setpoints at the control board. As the sensor detects a diminishing light level that corresponds with the LOW setpoint, the control board matches the two signals and the lights are switched ON. As the sensor detects an increasing light level, the control board's HIGH setpoint switches the lights OFF. The LOW and HIGH setpoint separation creates a "deadband". This prevents the sensor from

switching light levels between the setpoints, thus eliminating nuisance or intermittent changes.

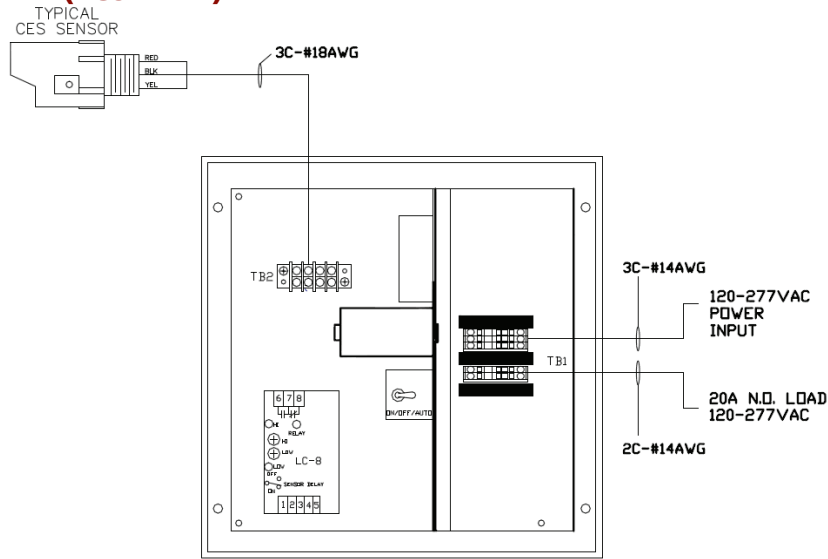
All components are factory tested to assure maximum reliability. The entire assembly is mounted in a NEMA 1 hinged door enclosure with the high and low voltage components separated by a barrier. The system is constructed to UL508A standards and each unit carries an Electrical Testing Laboratories label.

The advantages of using the LC81-B or LC81-BHT lighting control system are found in stability, versatility, quality and accuracy. Once mounted, the sensor, power and lighting loads need only to be wired, and the system is ready to operate.

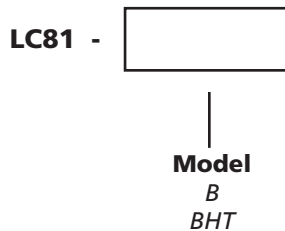
TECHNICAL DATA - LC81-B, LC81-BHT

Input Voltage:	120VAC or 277VAC
Output :	1-120/277VAC 20A N.O.
Input Sensor Type:	CES Photodiode - 3 wire
Input Time Delay:	30 second, overrideable
Dead Band:	Adjustable - 5-95%
Accuracy:	+/-1% at 70°F (21°C) Derated to +/-5% above 120°F or below 0°F. (49°C / -18°C)
Override Switch:	Internal Hand-Off-Auto (HOA) switch
Enclosure Dimensions:	NEMA 1 12"H x 12"W x 4"D
Hold On Timer (BHT):	Adjustable 0-1hr Hold-On-Timer
Indicator:	Red High and Low setpoint LEDs, Red Relay ON LED
Temperature Range:	-13° to 140°F (-11° to 60°C)
Load:	Incandescent, Fluorescent, HID & LED

ONE-LINE DIAGRAM (LC81-BHT)



ORDERING INFORMATION



* For Sensor Selection See CES Sensor Datasheet